

Технические характеристики

По вопросам продаж и поддержки обращайтесь:

Алматы (727)345-47-04
Ангарск (3955)60-70-56
Архангельск (8182)63-90-72
Астрахань (8512)99-46-04
Барнаул (3852)73-04-60
Белгород (4722)40-23-64
Благовещенск (4162)22-76-07
Брянск (4832)59-03-52
Владивосток (423)249-28-31
Владикавказ (8672)28-90-48
Владимир (4922)49-43-18
Волгоград (844)278-03-48
Вологда (8172)26-41-59
Воронеж (473)204-51-73
Екатеринбург (343)384-55-89

Иваново (4932)77-34-06
Ижевск (3412)26-03-58
Иркутск (395)279-98-46
Казань (843)206-01-48
Калининград (4012)72-03-81
Калуга (4842)92-23-67
Кемерово (3842)65-04-62
Киров (8332)68-02-04
Коломна (4966)23-41-49
Кострома (4942)77-07-48
Краснодар (861)203-40-90
Красноярск (391)204-63-61
Курск (4712)77-13-04
Курган (3522)50-90-47
Липецк (4742)52-20-81

Магнитогорск (3519)55-03-13
Москва (495)268-04-70
Мурманск (8152)59-64-93
Набережные Челны (8552)20-53-41
Новокузнецк (3843)20-46-81
Ноябрьск (3496)41-32-12
Новосибирск (383)227-86-73
Омск (3812)21-46-40
Орел (4862)44-53-42
Оренбург (3532)37-68-04
Пенза (8412)22-31-16
Петрозаводск (8142)55-98-37
Псков (8112)59-10-37
Пермь (342)205-81-47

Ростов-на-Дону (863)308-18-15
Рязань (4912)46-61-64
Самара (846)206-03-16
Санкт-Петербург (812)309-46-40
Саратов (845)249-38-78
Севастополь (8692)22-31-93
Саранск (8342)22-96-24
Симферополь (3652)67-13-56
Смоленск (4812)29-41-54
Сочи (862)225-72-31
Ставрополь (8652)20-65-13
Сургут (3462)77-98-35
Сыктывкар (8212)25-95-17
Тамбов (4752)50-40-97
Тверь (4822)63-31-35

Тольятти (8482)63-91-07
Томск (3822)98-41-53
Тула (4872)33-79-87
Тюмень (3452)66-21-18
Ульяновск (8422)24-23-59
Улан-Удэ (3012)59-97-51
Уфа (347)229-48-12
Хабаровск (4212)92-98-04
Чебоксары (8352)28-53-07
Челябинск (351)202-03-61
Череповец (8202)49-02-64
Чита (3022)38-34-83
Якутск (4112)23-90-97
Ярославль (4852)69-52-93

Россия +7(495)268-04-70

Казахстан +7(727)345-47-04

Беларусь +(375)257-127-884

Узбекистан +998(71)205-18-59

Киргизия +996(312)96-26-47

эл.почта: pah@nt-rt.ru || сайт: <https://piovan.nt-rt.ru/>

HandlinkEVO

MANUAL COUPLING STATION

Handlink is the gasket-less manual coupling station that avoids contamination while assuring vacuum.

With the new couplings of Handlink, stainless steel is the only material that is in contact with the plastic granules.

The Handlink EVO version is equipped with an RFID tagging system with a local LED for real-time status of the connection.

In conjunction with Easy3+, the feeding system controls the proper closing or match between source and destination inhibiting the feeding cycles in case of open circuit or material mismatch and alerting the operator.

The Handlink EVO version allows the operator to couple material sources and receivers without error. A system of flashing colored LEDs assists the operator when setting up Handlink EVO.

On request, Handlink EVO can also be integrated with Users' feeding systems.

A version with brass threaded couplers and without tagging system, is available if required.



Coupling operations quick and easy by one hand



Outside sealing for avoiding contamination and vacuum leak



Error-proof receiver source coupling



PET Preforms
& Bottles



Rigid
Packaging



Automotive
components



Technical
parts



Medical
solutions



Thermoforming
& Technical Sheets



Flexible Film



Pipes, Profiles,
Cables



Fibres &
Strapping



Recycling



Compounds

Single module max number of sources	12
Single module max number of destinations	60
Ramifications material	Stainless steel or coated steel for abrasive pellets
Tagging technology	RFID integrated in the couplers and with a local led
Coupling configuration	Brass threaded coupler or twist coupler
Option	HandView
WF4.0 integration	Fully integrated via Easy3+ control
Special execution	Version for PLC control and with glass elbows available on request



The twist couplers integrate the tagging system, with a local led for indication of connection status



All the surface in contact with granules are in stainless steel and there is no risk of contamination due to sealing



HandView can give a complete visualization of the all the connections status and suggestions to solve problems of not correct connections

	Coupling	Tagging	Diameter available (mm)
Handlink	Brass threaded	Not available	40 / 50 / 60 mm
	Twist		
Handlink EVO	Twist	Standard	

DeDuster®

by **petron**
PiovanGroup



DUST, STREAMERS OR ANGEL HAIR REMOVAL

From 20 kg/h to 150t/h

Some dust and contaminants occur naturally while others are caused by the way the products are handled. The grinding process of post-consumer plastic naturally produces dust and impurities in plastic pellets, both fines (dust) and angel hair (streamers), are generated by the friction in conveying lines. Dilute phase systems create large amounts of dust and streamers; the higher the velocity, the larger the amount of impurities. Pipe elbows also cause friction and result in the creation of more dust and streamers. The high pressure in dense phase, or slow motion systems, creates very fine dust due to wall friction and friction between pellets. Temperature, pellet shape and product characteristics can also contribute to the creation of dust.

The plastics industry cleans pellets to improve the quality of both the pellets and the finished plastic product.

To address this list of requirements, Pelletron, part of Piovan Group, developed a cleaning machine that combines a variety of air wash principles, plus the revolutionary electro-static flux field feature, and built it with the lowest possible construction height. When electrostatically charged particles enter into the Magnetic Flux Field, the resulting “Lorentz Force” weakens the electro-static bond between fine dust and plastic pellets. This weakening, in combination with the air flow, allows the micro fine particles attracted to the pellet surfaces to be removed.



Compact size



Quick return on investment



Visible results



PET Preforms
& Bottles



Rigid
Packaging



Automotive
components



Technical
parts



Medical
solutions



Thermoforming
& Technical Sheets



Flexible Film



Pipes, Profiles,
Cables



Fibres &
Strapping



Recycling



Compounds

Configurations

- Open Loop for processes with frequent product changes or for lines with frequent color changes in order to avoid cross contamination.
- Closed Loop for standard operations with the same or similar product grades or for inert gas applications.



The lightweight C-20 DeDuster® requires extremely low heights for installation between the hopper loader and inlet hopper of an injection molding machine



DeDuster® models XP180 to XP1500 can be equipped with an automated inlet deflector to distribute the material evenly over both wash decks. This option eliminates the need for the installation of a separate feeding device



For special applications with light weight bulk densities such as recycling, food, non-food we recommend using a single deck DeDuster® of the P-Series

	Output (kg/h)	Height flange to flange (mm)
RC1	20-350	305
XP5	250- 450	552
XP15	500- 1.500	600
XP45	1.500- 5.000	840
XP90	5.000- 10.000	840
XP180	10.000- 20.000	1,02
XP360	20.000- 40.000	1,02
XP540	40.000- 60.000	1,48
XP720	60.000- 80.000	1,78
XP900	80.000- 95.000	1,78
XP1080	95.000- 110.000	1,91
XP1500	110.000- 150.000	2,4

FL-1525



AUTOLOAD COMPRESSED AIR LOADER

The AUTOLOAD FL-1525 is the ideal loading system for small molding machine and extrusion operations, and is designed to handle dusty resins. The unit is shipped complete with everything needed for quick startup.

This model is designed to accurately load a single inlet with the option of using Virgin or Regrind material. The unit mounts directly onto the machine throat and is easy to install with custom adaptors. The optional unique magnetic assembly protects the equipment by separating all ferrous metals from the material stream. The AUTOLOAD FL-1525 runs quietly and is simple to maintain. Quick Material Changes are routine with this model and minimize downtime for cleaning large hoppers.

The main features are:

- Maximum Throughput is 1,000 PPH @ 100 PSI of Virgin or Regrind Material
- Under 28" tall
- Total Automation of the Loading Process
- Stainless Steel and Anodized Aluminum Construction
- Whisper Quiet
- Installs in Minutes with Custom Adaptors
- Economical to Operate
- Easy to Clean
- 110VAC Operating Voltage



Regrind handling available



Low profile/low material inventory



High wear version available



PET Preforms
& Bottles



Rigid
Packaging



Automotive
components



Technical
parts



Medical
solutions



Thermoforming
& Technical Sheets



Flexible Film



Pipes, Profiles,
Cables



Fibres &
Strapping



Recycling



Compounds

Shipped Complete With

- Inlet Hopper/Filter Assembly. 1 1/4" Inlet
- 10 feet of 1.25" material transfer hose
- 10 feet of 3/8" Polyflow air line tubing for accelerator
- Control Assembly
- Sensor/Sightglass Assembly
- Customized Machine Mount
- 5 Micron Hanging Bag Filter
- Equipment Manual

Options

- Magnet Assembly, MG-3500
- Accelerator Assembly, AC-5125
- Collector Box CB-2500
- Wand Assembly, WN 6125
- Control Units
- 220VAC Operating Voltage



The control unit receives a signal from the sightglass sensor, which turns on the controller and supplies air to the venturi to move the material.

Super Accelerators and Wands are used for conveying distances greater than 60ft., or for materials with greater bulk density.

AUTOLOAD magnet assemblies are fabricated from rare Earth magnets, the strongest magnets available.

Pressure (PSI)	Load Time (Seconds)	CF of Air per Load	SCFM (Standard)	Throuput Rate (Lbs./hr.)
20	9	2.10	14.0	400
25	7.4	2.16	17.5	486
30	6.5	2.28	21.0	554
35	6.0	2.45	24.5	600
40	5.6	2.65	28.0	643
45	5.3	2.78	31.5	679
50	5.0	2.92	35.1	720

AL II JR



AUTOLOAD COMPRESSED AIR LOADER

The Autoload II JR is the ideal loading system for small molding machine operations, and shipped complete with everything needed for quick startup.

The ALII JR model features a compact design that is simple and safe to use. The unit mounts directly onto the machine throat and is easy to install with custom adapters. The optional unique magnetic assembly protects the equipment by separating all ferrous metals from the material stream.

The Autoload II JR runs quietly and is simple to maintain. Quick Material Changes are routine with the Autoload II JR and minimize downtime for cleaning large hoppers.

The main features are:

- Standard Throughput is 100 PPH @ 50 PSI of Virgin Material ONLY
- 4.15" diameter, less than 14" tall
- Total Automation of the Loading Process
- Stainless Steel and Anodized Aluminum Construction
- Whisper Quiet
- Installs in Minutes with Custom Adapters
- Economical to Operate
- Easy to Clean
- Instant Filter Access
- 110VAC



Regrind handling available



Low profile/low material inventory



High wear version available



PET Preforms
& Bottles



Rigid
Packaging



Automotive
components



Technical
parts



Medical
solutions



Thermoforming
& Technical Sheets



Flexible Film



Pipes, Profiles,
Cables



Fibres &
Strapping



Recycling



Compounds

Shipped Complete With

- Receiver Assembly
- 10 feet of 1.25" material transfer hose
- 10 feet of 3/8" Polyflow air line tubing for accelerator
- Control Assembly
- Customized Machine Mount

Options

- Magnet Assembly, MGII-ASY
- Accelerator Assembly, AC-5125
- Collector Box
- Wand Assembly, WN 6125
- Control Units
- 220VAC Operating Voltage



The control unit receives a signal from the sightglass sensor, which turns on the controller and supplies air to the venturi to move the material.



Super Accelerators and Wands are used for conveying distances greater than 60ft., or for materials with greater bulk density.



AUTOLOAD magnet assemblies are fabricated from rare Earth magnets, the strongest magnets available.

Pressure (PSI)	Load Time (Seconds)	CF of Air per Load	SCFM (Standard)	Throuput Rate (Lbs./hr.)
20	9	2.10	14.0	400
25	7.4	2.16	17.5	486
30	6.5	2.28	21.0	554
35	6.0	2.45	24.5	600
40	5.6	2.65	28.0	643
45	5.3	2.78	31.5	679
50	5.0	2.92	35.1	720

AL 1525-R



AUTOLOAD COMPRESSED AIR LOADER

The AL 1525-R Series is the ideal loading system for small molding machine operations and is the solution for loading abrasive materials. The unit is shipped complete with everything needed for quick startup.

The AL 1525-R model features a compact design that is simple and safe to use. The unit mounts directly onto the machine throat and is easy to install with custom adaptors.

The optional unique magnetic assembly protects the equipment by separating all ferrous metals from the material stream. The AL 1525-R runs quietly and is simple to maintain. Quick Material Changes are routine with the AL 1525-R and minimize downtime for cleaning large hoppers.

The main features are:

- Maximum Throughput is 1,000 PPH @ 100 PSI of Virgin or Regrind Material
- Under 28" tall
- Total Automation of the Loading Process
- Stainless Steel and Anodized Aluminum Construction
- Whisper Quiet
- Installs in Minutes with Custom Adaptors
- Economical to Operate
- Easy to Clean
- 120VAC Operating Voltage



Regrind handling available



Low profile/low material inventory



High wear version available



PET Preforms
& Bottles



Rigid
Packaging



Automotive
components



Technical
parts



Medical
solutions



Thermoforming
& Technical Sheets



Flexible Film



Pipes, Profiles,
Cables



Fibres &
Strapping



Recycling



Compounds

Shipped Complete With

- Heavy Duty Inlet Hopper/Filter Assembly
- Reinforced steel sleeved accelerator/wand assembly
- 10 feet of 1.25" material transfer hose
- 10 feet of 3/8" Polyflow air line tubing for accelerator
- Control Assembly
- Sensor/Sightglass
- Customized Machine Mount

Options

- Magnet Assembly
- Grinder Spike
- Collector Box, CB-2500
- CPM Accelerator Assembly1
- CPM Wand Assembly1
- Wear Plate Assembly
- 220VAC Operating Voltage



The control unit receives a signal from the sightglass sensor, which turns on the controller and supplies air to the venturi to move the material.



Super Accelerators and Wands are used for conveying distances greater than 60ft., or for materials with greater bulk density.



AUTOLOAD magnet assemblies are fabricated from rare Earth magnets, the strongest magnets available.

Pressure (PSI)	Load Time (Seconds)	CF of Air per Load	SCFM (Standard)	Throuput Rate (Lbs./hr.)
20	9	2.10	14.0	400
25	7.4	2.16	17.5	486
30	6.5	2.28	21.0	554
35	6.0	2.45	24.5	600
40	5.6	2.65	28.0	643
45	5.3	2.78	31.5	679
50	5.0	2.92	35.1	720

AL-1555



AUTOLOAD COMPRESSED AIR LOADER

The AUTOLOAD AL-1555 is the ideal loading system for small molding machine operations, and shipped complete with everything needed for quick startup.

This model is designed to load two different materials into the machine accurately and economically without any layered effect. The unit mounts directly onto the machine throat and is easy to install with custom adaptors. The optional unique magnetic assembly protects the equipment by separating all ferrous metals from the material stream.

The AUTOLOAD AL-1555 runs quietly and is simple to maintain. Quick Material Changes are routine with this model and minimize downtime for cleaning large hoppers.

The main features are:

- Maximum Throughput is 1,000 PPH @ 100 PSI of Virgin or Regrind Material
- Under 28" tall
- Total Automation of the Loading Process
- Stainless Steel and Anodized Aluminum Construction
- Whisper Quiet
- Installs in Minutes with Custom Adaptors
- Economical to Operate
- Easy to Clean
- 120VAC Operating Voltage



Regrind handling available



Low profile/low material inventory



High wear version available



PET Preforms
& Bottles



Rigid
Packaging



Automotive
components



Technical
parts



Medical
solutions



Thermoforming
& Technical Sheets



Flexible Film



Pipes, Profiles,
Cables



Fibres &
Strapping



Recycling



Compounds

COMPRESSED AIR CONVEYING

Shipped Complete With

Heavy Duty Inlet Hopper/Filter Assembly
Reinforced steel sleeved accelerator/wand assembly
10 feet of 1.25" material transfer hose
10 feet of 3/8" Polyflow air line tubing for accelerator
Control Assembly
Sensor/Sightglass
Customized Machine Mount

Options

Magnet Assembly
Grinder Spike
Collector Box, CB-2500
CPM Accelerator Assembly1
CPM Wand Assembly1
Wear Plate Assembly
220VAC Operating Voltage



The control unit receives a signal from the sightglass sensor, which turns on the controller and supplies air to the venturi to move the material.



Super Accelerators and Wands are used for conveying distances greater than 60ft., or for materials with greater bulk density.



AUTOLOAD magnet assemblies are fabricated from rare Earth magnets, the strongest magnets available.

Pressure (PSI)	Load Time (Seconds)	CF of Air per Load	SCFM (Standard)	Throuput Rate (Lbs./hr.)
20	9	2.10	14.0	400
25	7.4	2.16	17.5	486
30	6.5	2.28	21.0	554
35	6.0	2.45	24.5	600
40	5.6	2.65	28.0	643
45	5.3	2.78	31.5	679
50	5.0	2.92	35.1	720

D450-550



PNEUMATIC LOADERS

Penta decided to develop a new compact and versatile filter; it is suitable for various uses and applies in industrial dedusting but is particularly suitable for small pneumatic transports with high dust loads.

Allow managing a wide range of products, choosing:

- Fitting filter media.
- Case-by-case assessment of ascending and crossing velocities.
- Ad hoc flushing timings.
- Handling of air flow rates up to 400 m³/h.



New design to empower the filtering and the cleaning cycle



Quick clamp system



Full A304 construction



PET Preforms
& Bottles



Rigid
Packaging



Automotive
components



Technical
parts



Medical
solutions



Thermoforming
& Technical Sheets



Flexible Film



Pipes, Profiles,
Cables



Fibres &
Strapping



Recycling



Compounds

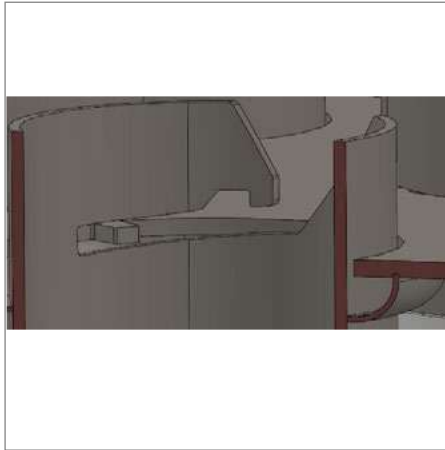
Max level of vacuum Suitable for absolute vacuum and +1bar positive pressure applications

Max air flow 400 m³/h

Filtering capacity Ø450 16 bags 4,1 m² | Ø550 20 bags 5,1 m²



Compressed air collector fully integrates inside the filter



Bayonet basket fixing system with bottom extraction

EasyPowder

Feeder for powdered resins

Benefits:

- Easy and quick cleaning operations.
- Made entirely of stainless steel.
- Cartridge filter with automatic cleaning.
- Use of all the product retained in the filtration process.
- Product detection in the feeder through rotary sensor.
- Free orientation of the material inlet nozzle (top and bottom).



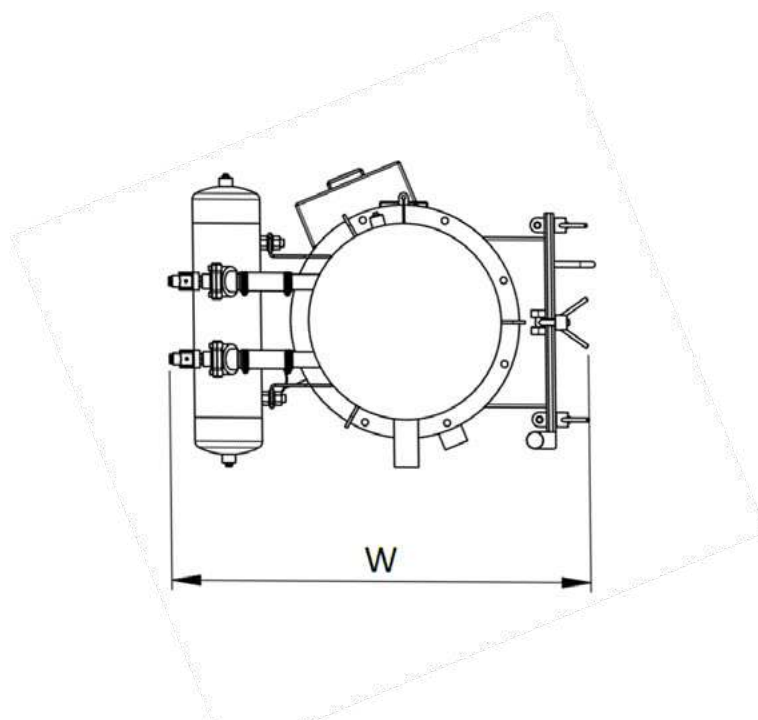
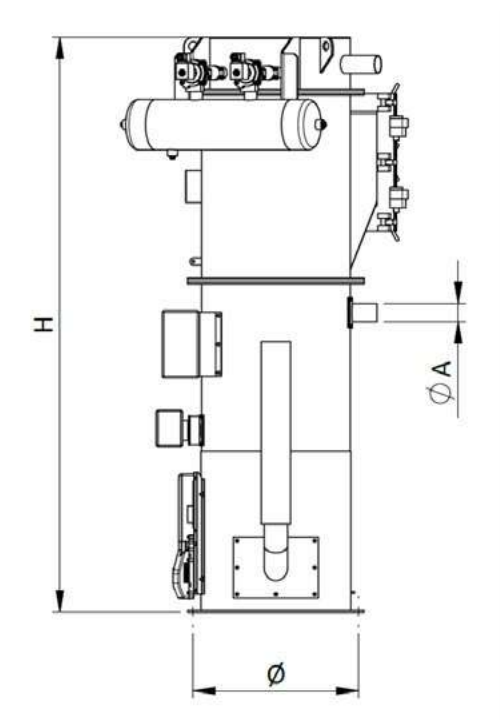
The EasyPowder is a hopper feeder ideal for the automatic transport of large volumes of resins in powder form. Robust design, reduced dimensions, entirely stainless steel construction, and a high-efficiency filtration system that ensures

full use of the product, avoiding losses or any generation of waste, are some of the elements of its standard configuration that ensure the total reliability of EasyPowder.

Main features:

- The unique design of the feeder and filter assembly allows easy opening of the door, without the need to disconnect electrical cables and pipes, facilitating cleaning operations.
- Perfect sealing, due to the specific design of the discharge device.
- Reduced maintenance operations and high filter reliability.

TECHNICAL DATA		P50-404
Capacity	dm ³	50
Compressed air pressure	bar	6 ÷ 8
Compressed air consumption	Nm ³ /h	3
Dimension W	mm	880
Dimension H	mm	1600
Diameter Ø	mm	450
Material input ØA	mm	50/60



Vakupulse



DENSE-PHASE CONVEYING

From 740 up to 2,650 kg/h

Vakupulse is specifically designed to handle materials that need to be transported at low speed, such as abrasive materials that contain glass fibers or an high amount of filler and soft products like EVA or PE. The targets are:

- Avoid abrasion and wearing of the process piping in case of abrasive material
- Preserve the plastic granules in case of delicate or soft material, avoiding the creation of angel hair and dust.

The system is based on a cyclone installed on the unit, wich discharges material by batch into the below machine.

Vakupulse has a significant capacity up to 2.650 kg/h. The low transportation speed (of the conveying air is about 2 m/s) has also a beneficial impact on the energy consumption and on the noise level.



No degradation of the soft or delicate materials during conveying



No abrasion or wearing of the feeding pipe



Low noise emission and energy consumption



PET Preforms
& Bottles



Rigid
Packaging



Automotive
components



Technical
parts



Medical
solutions



Thermoforming
& Technical Sheets



Flexible Film



Pipes, Profiles,
Cables



Fibres &
Strapping



Recycling



Compounds

Conveying speed	3—10 m/s
Pressure range	0.5—5 bar
Max capacity	2,650 kg/h

	Max Capacity (kg/h)*	Pipe diameter (mm)	Max pipe lenght (m)	Load power (kw)
VP1	742	48,3	40	2,5
VP2	1149	60,3	45	2,5
VP3	1899	76,3	50	2,5
VP3	2646	88,9	70	6

* NOTE: performances are evaluated for the feeding of plastic granules, with a bulk density of 0.6 kg/dm³ and with a pipe route that includes 6 bends (maximum pipe route length according to the present table).

VPC | VP | NAS VALVE



PNEUMATIC VALVES FOR CENTRALISED SYSTEMS

Wide range of valves to assure the maximum flexibility of feeding system configuration, with dedicated or shared transport lines (NAS), possibility to manage the regrind on the machine (VP) and always guaranteeing a clean transport pipeline (VPC).



Perfect sealing



No material stagnation



Pipe cleaning



PET Preforms
& Bottles



Rigid
Packaging



Automotive
components



Technical
parts



Medical
solutions



Thermoforming
& Technical Sheets



Flexible Film



Pipes, Profiles,
Cables



Fibres &
Strapping



Recycling



Compounds

VP valve

Installed on the receivers inlet, allows the feeding of two materials coming from two separate sources; typical application: regrind managing

VPC single cap

Installed on the material feeding line close to the suction point, allows complete cleaning of the pipe

VPC double cap

The two-way configuration allows the pipe cleaning function combined with the closed loop configuration in order to keep the dried material under controlled conditions

NAS

Installed at the inlet of the vacuum receivers, allows the feeding of multiple destinations with a single shared material line, keeping each receiver separate



Thanks to the use of NAS valve, it is possible to feed different destinations with a common material line



VPC valve with double cap configuration can be used to realise closed loop conveying



The single-cap valve is realised with a nylon body and with a grid to filter the process air

	Command available	Diameter (mm)
VP	24 Vdc / 230 V 50-60 HZ	40, 50, 60, 63.5
VPC Single cap	24 Vdc / 230 V 50-60 HZ	40, 50, 60, 63.5
VPC Double cap	24 Vdc / 230 V 50-60 HZ	40, 50, 60, 63.5
NAS	24 Vdc / integrated in the receiver control	40, 50, 60

Residence Hopper



HOPPER

Residence hoppers assure a reservoir of material just before the Injection moulding machine, downstream all the conditioning processes such as drying.

Piovan residence hoppers are designed to keep the product in the best condition to be processed. It has a hinged lid for easy access to the inside and thickness thermal insulation.



Stainless steel construction



Insulated version for dried or hot material



Wide range



PET Preforms
& Bottles



Rigid
Packaging



Automotive
components



Technical
parts



Medical
solutions



Thermoforming
& Technical Sheets



Flexible Film



Pipes, Profiles,
Cables



Fibres &
Strapping



Recycling



Compounds

Standard characteristics

Options

Hinged lid and inspection window

Slide gate, hopper support with side discharge, hinged lid with lock to keep the open position



The TB series is completely manufactured in stainless steel, with lid and inspection window



The TM series is specifically designed for dried materials, with a complete insulation cladding



The buffer hopper can be equipped with a hinged lid so that it is not necessary to remove the receiver

	Modular	Volume (lit)	Upper flange (mm)	Insulation layer (mm)	Discharge diam (mm)
TBM2, TBM4, TBM6	*	2, 4, 6	185	NO	49.5
TBM5, TBM10, TBM15, TBM20, TBM25	*	5, 10, 15, 20, 25	280	NO	65
T2M		1,5	185	15	47
T3M, T5M, T10M, T20M		3, 5, 10, 20	280	30	67
TB5, TB10, TB20, TB40		5, 10, 20, 40	280	NO	64
TB75, TB100, TB150		75, 100, 150	280	NO	76

Piping and Accessories

HIGHLY CUSTOMIZED SOLUTIONS

The feeding & Conveying systems are enriched by a wide range of accessories and pipes to match all the requirements for customisation.



Smooth internal surface



Wide range of diameters available



Special execution for abrasive material



PET Preforms
& Bottles



Rigid
Packaging



Automotive
components



Technical
parts



Medical
solutions



Thermoforming
& Technical Sheets



Flexible Film



Pipes, Profiles,
Cables



Fibres &
Strapping



Recycling



Compounds

Suction probe

single or double pipe, realised in stainless steel can be inserted inside storage bin or big-bag

Suction box

available with single or multiple connections, with different diameters and with interface for silos or for drying hopper

Joints

stainless steel joints, available in two versions MT or HT, designed to guarantee installation with smooth pipe connection

Elbows

available with different radius, 90° or 45° bending, in stainless steel, with coating layer to increase the corrosion resistance or complete made of glass; diameter is according to piping sizing

Piping

stainless steel piping available in different diameters, with smooth internal surface to avoid creation of dust or “angel hairs”.

Vacuum components

complete kit to realise the vacuum line composed by aluminium pipes, elbows and “T” joints

Support

kit of supports, brackets, collars, floor stands and installation material



All the internal surfaces in contact with the plastic granules are smooth and manufactured in stainless steel, minimizing internal friction, dust and angel hairs creation



Stainless steel double and single pipe suction probes are available for all diameters



Suction boxes are realised with different configurations according to the number of connections required and where they have to be installed

Permanent Vacuum System



LARGE PRODUCTION VACUUM SYSTEM

Permanent vacuum systems consist of several vacuum units working in parallel.

The system automatically switches on or off the vacuum pumps according to the real need of the production.

Some advantages that can be obtained with a permanent vacuum feeding system are:

- A high degree of efficiency and low energy consumption
- Optimisation of pump running time
- Lower number of vacuum units and filters compare to traditional systems, with a lower maintenance costs
- The volume of the residence hoppers can be reduced
- The system is more flexible in case of future expansions
- Simultaneous receivers can convey simultaneously.



Flexibility for managing different materials



Energy efficiency



Long lasting



PET Preforms & Bottles



Rigid Packaging



Automotive components



Technical parts



Medical solutions



Thermoforming & Technical Sheets



Flexible Film



Pipes, Profiles, Cables



Fibres & Strapping



Recycling



Compounds

Control

PLC Siemens highly customizable

Vacuum group

Composed by rotary screw pump, with compact foot print, high efficiency solution and low noise level

Main line pipe diameter

154 mm, 204 mm/different diameter available according to total throughput

Typical throughput range

Up to 2- 6 ton/hour

Filtering section

Auto-cleaning filter, with high capacity cartridges



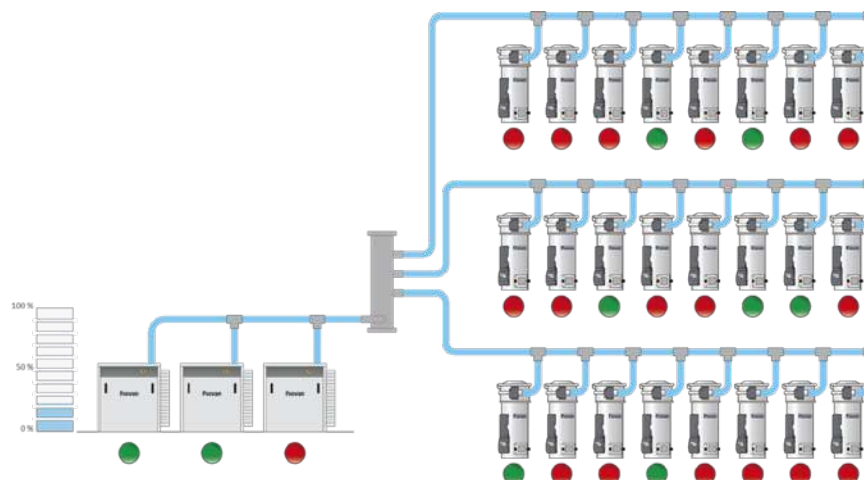
The filtering elements are equipped with automatic cleaning device and with a wide door for maintenance and cleaning



Vacuum receivers are equipped with an electrical interface to be connected to the central PLC control system



The central control allows a complete control of the system, such as enable/disable receivers and setting of conveying and pipe cleaning time



Easylink+



AUTOMATIC COUPLING STATION

Automatic coupling station able to manage up to 60 inlets/outlets with pipe size from 40 to 76 mm with minimum footprint.

Designed for easy maintenance, it is totally safe for the operators both during regular functioning and service activities.

The geometries, the advanced cleaning systems and the wear resistant materials assure the constant production quality in most demanding conditions.

Integration with Winfactory 4.0 allows:

- maximum traceability of materials
- automatic setting of transport and line cleaning times.

Easylink+ is available with supporting frame for floor or mezzanine installation.

All the internal pipe routing is realised with rigid piping, without any flexible hose.



Fast and precise



Ideal quality traceability



High flexibility

Diameter available

40, 50, 60 and 76 mm

Control

PLC control to manage the automatic coupling station, fully integrated with the feeding control Easy3/Easy3+

Options available

Inlet dedicated for cleaning with grid or with cartridge filter, painted steel or Plexiglas panels, individual slide gate for each outlet



The internal arm is equipped with a local cleaning device, in order to avoid risk of contamination in the common part of the circuit



Material database, sources, destination matrix and line recipes can be easily created in WF4.0 and use for the automatic setting of Easylink+



Pneumatic slide gates could be added as optional, preventing any risk of contamination

		Diam. 40 mm	Diam. 50 mm	Diam. 60 mm	Diam. 76 mm
Frame EL20	IN	20	20	20	16
	OUT	21	21	21	17
Frame EL40	IN	39	39	35	29
	OUT	40	40	36	30
Frame EL60	IN	59	59	52	-
	OUT	60	60	53	-

Cyclone



FILTER

Cyclone filters allow dust removal with minimal cleaning requirements.

It is particularly required in case of very dusty materials to avoid blocking and prolonging regular maintenance in downstream filters.



No filter cartridge



Minimal cleaning requirements



Avoids blocking of traditional filters



PET Preforms
& Bottles



Rigid
Packaging



Automotive
components



Technical
parts



Medical
solutions



Thermoforming
& Technical Sheets



Flexible Film



Pipes, Profiles,
Cables



Fibres &
Strapping



Recycling



Compounds

Construction material	Painted steel
Max level of vacuum	650 mbar
Max air temperature	180 °C



Collecting bin with five swivel castors, inspection window, three closing clamps to guarantee the perfect tightness



Lid with clamp ring to make possible the rotation of the outlet for a flexible installation layout



Butterfly valve to separate the collecting bin from the process

	Connections diameter (mm)	Collecting bin capacity (l)	Max air flow (m ³ /h)
CL35	40, 50	35	300
CL45	60, 76	75	900



CF 6

FILTER WITH AUTOMATIC CLEANING

- For dusty materials
- Limited maintenance
- Different types of filters available

Filters are critical to assure process continuity specially for dust materials. Nevertheless they need to be periodically changed or cleaned.

Piovan's automatic cleaning system cleans paper or Polyester cartridges by automatic compressed air jets and the dust is collected in containers which are easy to empty.

CF



FILTER

Filters are critical to assure process continuity specially for dust materials. Nevertheless they need to be periodically cleaned.

Beside the traditional paper cartridge filter provided a standard, a polyester cartridge filter, more resistant and washable, is available on request.

The CF filters provide an high filtering capacity thanks to the cyclonic effect. The vacuum breaker valve on the filter provide a sudden variation of the internal pressure that makes the dust falling down from the cartridge, keeping it cleaning.



High filtering capacity



Easy to clean



Increases the vacuum unit life



PET Preforms
& Bottles



Rigid
Packaging



Automotive
components



Technical
parts



Medical
solutions



Thermoforming
& Technical Sheets



Flexible Film



Pipes, Profiles,
Cables



Fibres &
Strapping



Recycling



Compounds

Construction material

Painted steel

Control

Possible integration in a Easy3 or in a centralised PLC control



Paper or polyester filtering cartridge available



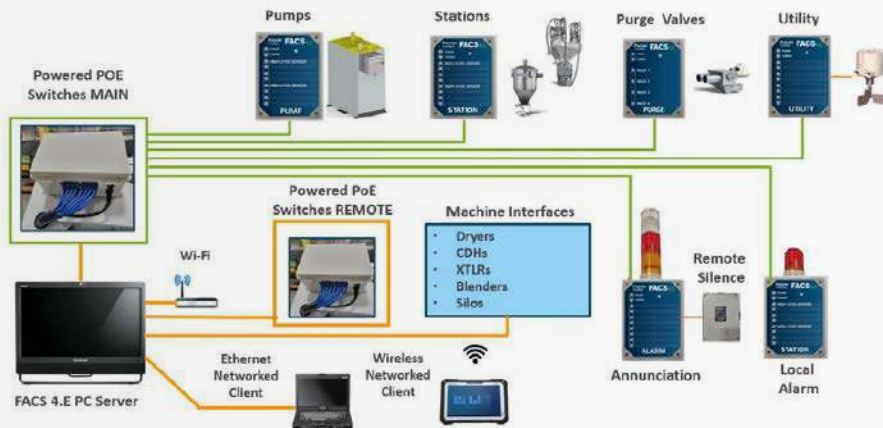
Easy removable filter cartridge



Compact solution (FZ) for small blower

	Connections diameter (mm)	Collecting bin capacity (lit)	Max air flow (m³/h)	Filtering mesh (µm)	Total filtering surface (m²)
FZ	40	/	180	8	1,725
CF1	40, 50	6	250		2,8
CF2	40, 50	30	500		6,75
CF3	50, 60	50	800		10
CF4	50, 60, 76	50	800		10

FACS 4.E



Simple, ethernet connectivity for power and control



Infinite Low-Cost DIY Expansions



PC Server HMI with up to 16 Clients PCs or Tablets with Machine Auxiliary Interface

FACS 4.E DISTRIBUTED POWER/CONTROL

Conveying System Controller using “Power Over Ethernet” technology for communication and powered device operation. HMI is accomplished using Windows PCs Server workstation, with available 16 client computers or tablets for re-mote monitoring and access. POE Switch Panels are provided to comprise the FACS Machinery Network, configured with the necessary POE Ethernet Ports to connect to remote device panels to operate the system components.

FACS Panels are available for Pumps, Station groups, Purge Valve groups and Utility Panels, each with the required I/O points to operate the equipment. Alarm visualization is provided with dedicated Annunciator Panel, configurable to the selectable component conditions.

Equipment groups are assembled in proximity to the Main POE Switch, to operate the local area machines. Remote POE Switches can be added to the Non-POE network to provide additional I/O points in a remote area using Star Network Topography.

FACS 4.E is more than a conveying system control, it can serve as a central supervisory system with direct machinery interfaces for monitoring and control of Dryers, Central Dryer Units, Crys-tallizers, Blenders and Silos.

Using the Windows-based platform, FACS 4.E is simple to install, setup and operate. Full graphic displays show all component functions and device indication. Extensive input screens are available for all device parameter setting.

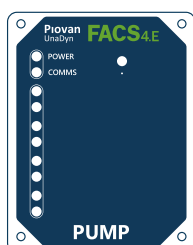
All changes are logged with Event and Alarm History reports are available on demand, selectable by production range.

FACS 4.E SYSTEM COMPONENTS

FACS POE Switch Panels	POE-8: 7 usable ports, 1 reserved for FACS Server Network POE-16: 15 usable ports, 1 reserved for FACS Server Network and (2) used for joining (2) (8)-port integral switches Requires 110 VAC power
FACS 4.E Modules	<ul style="list-style-type: none"> - Compact panel with control and communication boards - External Ethernet connector - Component Operation I/O Visualization with LED Indication - (4) Terminalized Connectors to paired I/O Points



Pump Module – Single Pump and Filter



Inputs: * Required

- Vacuum Switch *
- Motor Overload
- Local On/Off

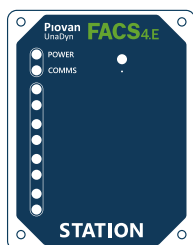
Outputs: * Required

- Vacuum Pump Motor Starter *
- Vacuum Breaker Valve
- Filter Pulse
- Exhaust Segregation

Server Network for HMI and Remote Interface



Station Module – Single, Quad, Dual Bonus or Dual Simple/One Bonus



Inputs: * Required + (3)

- Load Level Sensor *
- High Material Sensor for Load-Till-Full or Continuous Vacuum
- Stop Load Input
- Local On/Off

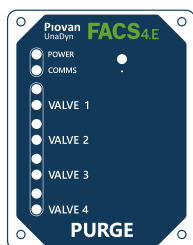
Outputs: * Required + (3)

- Vacuum Sequence Valve *
- Dual Ratio Valve
- Positive Shut-off
- Filter Pulse
- Dump Valve
- Local Purge Valve
- Local FACS 4.E Box Alarm



Standard Terminalized I/O Plug/Connectors

Purge Module – Operates up to (4) Material Global Purge Valves



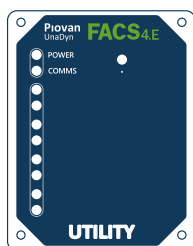
Outputs:

- Purge Valve 1
- Purge Valve 2
- Purge Valve 3
- Purge Valve 4



System-wide Alarm Annunciator with optional remote silence

Utility Module – Operates up to (4) discreet custom alarm outputs



Outputs:

- Utility Point 1
- Utility Point 2
- Utility Point 3
- Utility Point 4



Panel-mounted Local Alarm



Rail Car Unloaders

RAILCAR UNLOADING SYSTEMS

- Efficiently removes substantial levels of fines conveying moderate to dusty materials and regrind
- Easily removable collection can with sightglass
- Prolongs life of pump pre filter and reduces maintenance

Una-Dyn offers a complete line of Railcar Unloading Systems for vacuum and combination vacuum/pressure configurations. Standard configurations are available with an unload rate up to 20,000PPH or we can custom configure a design that accommodates the needs of your plant material handling system and budget.

Optimize and maximize your material handling system - visit our Integrated Systems Group, ISG, page and see how our design and installation services can help you with design and installation of piping, loading and manifold systems that are required to complete a rail car unloading system.

Only available in: US

LS Series

Glass Tube Chambers

Benefits:

- Visual material indication
- Minimal material residence time
- All stainless steel & glass construction
- Exclusive “GB” finish
- 4” & 8” available as single inlet or with external dual ratio valve
- Adjustable level sensor
- Optional SMC dual ration control



The LS series glass tube chambers mount directly on the throat of the process machine and offers exceptional material visibility with minimal material residence. An adjustable level sensor on the glass tube provides precise material level control.

Available in 4” and 8” diameters, choose various line sizes to accommodate different throughput requirements. Constructed of stainless steel and glass to resist wear from abrasive materials; Una-Dyn’s exclusive “GB” finish

does not require painting and reduces the possibility of contamination ensuring a clean receiving environment. Change-over is fast and simple with quick release clamps for disassembly providing easy access to the inside of the chamber. For greater flexibility, the 4” and 8” versions offer an optional internal vacuum seal in the event a vacuum cannot be pulled directly on the throat of the processing machine.

Glass Tube Loaders

- Self-contained modular units
- Seamless, stainless steel design
- Pulse clean filter
- Standard SMC-SCL control
- Optional external dual ratio valve

All material contact surfaces are constructed of stainless steel with no internal seams or ledges and the easy-clean filter is purged of dust and fines after each load cycle with an automatic pulse cleaning cycle. Each loader comes complete with tubing, required hardware and a SMC-SCL controller for quick set up and operation.



For proportional loading of virgin and regrind material, an optional external dual ratio valve can be remote mounted or mounted to the chamber inlet. The valve's positive shut-off design incorporates a remote, solid-state controller for accuracy and precise repetition in every cycle. Throughput rates available up to 400 PPH.

The diagram illustrates a vacuum breaker system. On the left, a schematic shows a vacuum breaker valve with a yellow dot for 'VACUUM BREAKER', a green dot for 'VACUUM', and a red dot for 'PULSE'. Below the valve, a horizontal line separates the 'NO LOAD' state (with a red dot) from the 'EMPTY' state (with a blue dot). A 'STOP LOAD' button is shown at the bottom. On the right, a control panel features a digital display showing '1.00' and two buttons labeled 'UP' and 'DOWN'. Below the panel, a legend identifies the symbols: a green dot for 'LOAD TIME', a red dot for 'DUAL RATIO 1% B', a blue dot for '# DUAL RATIO CYCLES', and a yellow dot for 'DUMP TIME'.

- Dual ratio and filter pulse ready
- User adjustable load time and dual ratio parameters '%B' and number of 'A/B' shuttle cycles
- High-level material sensor



Pressure Conveying

PRESSURE CONVEYING SYSTEMS

- Pressure control
- Big Bag emptying and filling stations
- Bag emptying stations

For throughputs higher than 2.000kg/h FDM supplies pressure conveying systems. These are mainly used for the feeding of silos or if longer conveying distances are needed to transport the bulk from A to B. Possible applications are in combination with BigBag or Bag (25kg) emptying stations.

- Rotary or side channel blower
- Rotary valves for every kind of bulk
- Customized solutions
- Siemens control



LSB-45

SELF-CONTAINED LOADER

Brushless technology for minimal maintenance and high reliability

- Motor patented air seal bearing
- Throughput rate up to 450 PPH
- Conveying distances up to 60 equivalent feet

The LS-B series of self-contained brushless loaders come with an impressive list of standard features. Powered by SR commutated brushless motor technology, the LS-B series of brushless loaders delivers simple setup and operation with less motor maintenance.

All chamber material contact surfaces are constructed of stainless steel with no internal seams to trap material or fines. These loaders are built to last and eliminates the possibility of material contamination.

Ready for immediate operation, shipment is complete with tubing, hoses, clamps, material lance and solid state controls.

- Life expectancy is 5-10 times longer than brushed motor equivalent
- Electronically commutated switched reluctance motor
- SMC-SCL microprocessor control with digital display
- Stainless steel modular construction
- No internal seams- eliminating material hang up
- Available as single inlet or with optional external dual ratio valve
- Internal material deflector - standard
- High performance filter media

Only available in: US



LSB-95

SELF-CONTAINED LOADER

Brushless motor for minimal maintenance and high reliability

- Motor patented air seal bearing
- Throughput rate up to 950 PPH
- Conveying distances up to 60 equivalent feet

The LS-B series of self-contained brushless loaders come with an impressive list of standard features. Powered by SR commutated brushless motor technology, the LS-B series of brushless loaders delivers simple setup and operation with less motor maintenance.

All chamber material contact surfaces are constructed of stainless steel with no internal seams to trap material or fines. These loaders are built to last and eliminates the possibility of material contamination.

Ready for immediate operation, shipment is complete with tubing, hoses, clamps, material lance and solid state controls.

- Life expectancy is 5-10 times longer than brushed motor equivalent
- Electronically commutated switched reluctance motor
- SMC-SCL microprocessor control with digital display
- Stainless steel modular construction
- No internal seams- eliminating material hang up
- Available as single inlet or with optional external dual ratio valve
- Internal material deflector - standard
- High performance filter media

Only available in: US



GTC Chamber

GLASS TUBE VACUUM CHAMBER

A positive conic seal valve - conveying material to the chamber the first time - every time.

- Visual material indication
- Minimal material residence time
- 4" & 8" Available as single inlet or with external dual ratio valve

The GTC Series Glass Tube Vacuum Chamber features a positive conic seal valve that conveys material to the chamber the first time - every time. A unique single-valve air cylinder controls both the vacuum and resin unloading of the vacuum chamber.

Ideal for virgin, premixed virgin and regrind material, the GTC Series is protected with our exclusive "GB" finish for a clean receiving environment throughout the chamber lifetime. In addition, the GTC Series includes other traditional features, including a quick-disconnect lid, tangential material inlets, exceptional resin visibility with a minimal inventory glass tube chamber and an adjustable level sensor.

Add an optional external dual ratio valve to permit proportional loading of dual materials.

- All stainless steel & glass construction
- Exclusive "GB" finish
- Adjustable level sensor

Only available in: US



LS2 Chamber

VACUUM CHAMBER

Optimal vacuum power, excessive fines filtering and easy maintenance

- Modular design
- Heavy duty stainless steel construction
- Available in "Easy Flow" style for hard to flow materials(3.0 and 6.0 cu. ft. only)

The LS2 Series vacuum chambers are well equipped with an internal material deflector and protective cage around the discharge assembly. Constructed of stainless steel and a seamless design, the LS Series is sealed with our exclusive "GB" finish on the interior and exterior to eliminate resin contamination and promote the free flow of material. Experience optimal vacuum power, excessive fines filtering and easy maintenance.

Five chamber sizes plus an easy flow chamber style 3.0 CFT and 6.0 CFT models for hard to flow material. Mount an optional dual ratio valve to load virgin and regrind material.

- Maintenance free "GB" finish
- Removable sight glass - view flapper operation
- Stand for flapper protection
- Easy flow chamber models for difficult to flow material
- Protective cage around flapper assembly for easy maintenance
- Easy line size changes with bolt-on tube stubs
- Sight glass on mounting flange
- Optional bolt-on lid hinge
- Optional positive shut-off valve
- Optional external dual ratio valve
- Optional bag filter configurations

Only available in: US

LS Series 45 & 95

Self-Contained Vacuum Loaders

Benefits:

- All stainless steel construction
- Exclusive “GB” finish
- No internal seams
- Material deflector
- High performance filter media
- Leak-proof vacuum seal
- Available as single inlet or with external dual ratio valve
- Optional brushless motor



The LS series 45 & 95 self-contained loaders come with an impressive list of standard features and are ready for immediate operation. Shipped complete with tubing, hoses, clamps, material lance and solid state controls; you can be up and loading quickly.

Built to last, the LS-45 & LS-95 are constructed of stainless steel and coated with a Una-Dyn exclusive “GB” finish for

interior and exterior surface protection, eliminating the possibility of material contamination.

Easy installation, powerful heavy duty vacuum motors and features designed to simplify operation as well as reduce maintenance, the LS-45 & LS-95 are reliable choices for superior loading and durability.

LS Series 45 & 95 Self-Contained Vacuum Loader

More Performance

Powerful heavy-duty vacuum motors mounted to the loader lid simplifies installation and offers throughput rates up to 950 LBS/PH. Available in two sizes, both the LS 45 & 95 can be easily configured with an external fast-acting dual ratio valve to sequentially pull material from two different sources.

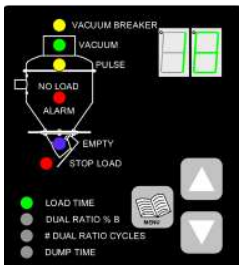
Material is moved quickly and efficiently with Posi Seal at the dump throat for a stronger vacuum and a seamless design that minimizes material hang-up points. A discreet material level sensor controls the loading sequence for a fully automatic operation.

Less Maintenance

Several standard features minimize maintenance and further extends the life of your loader. A fabric filter media fits snugly into a molded rubber gasket which serves as a secure chamber seal. The filter keeps dust and fines from entering the motor and can be replaced without having to replace the seal itself. To keep the filter clean, the LS series features a pulse sequence which directs a high velocity burst of air into the filter media for a thorough cleaning after each cycle. Our seamless loader design prevents fines, dust and material hang-up points.

Controls

SMC Control



All LS series loaders come standard with the SMC control.

Benefits:

- Dual ratio and filter pulse ready
- User adjustable load time and dual ratio parameters '%B' and number of 'A/B' shuttle cycles
- High-level material sensor



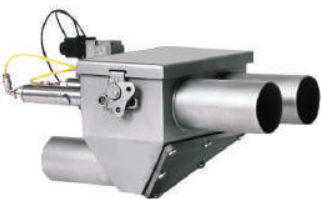
Posi Seal LS-45



Posi Seal & Stand LS-95



Material Deflector



Optional Dual Ratio Valve

LS Series 45 & 95

Self-Contained Vacuum Loaders

Benefits:

- All stainless steel construction
- Exclusive “GB” finish
- No internal seams
- Material deflector
- High performance filter media
- Leak-proof vacuum seal
- Available as single inlet or with external dual ratio valve
- Optional brushless motor



The LS series 45 & 95 self-contained loaders come with an impressive list of standard features and are ready for immediate operation. Shipped complete with tubing, hoses, clamps, material lance and solid state controls; you can be up and loading quickly.

Built to last, the LS-45 & LS-95 are constructed of stainless steel and coated with a Una-Dyn exclusive “GB” finish for

interior and exterior surface protection, eliminating the possibility of material contamination.

Easy installation, powerful heavy duty vacuum motors and features designed to simplify operation as well as reduce maintenance, the LS-45 & LS-95 are reliable choices for superior loading and durability.

LS Series 45 & 95 Self-Contained Vacuum Loader

More Performance

Powerful heavy-duty vacuum motors mounted to the loader lid simplifies installation and offers throughput rates up to 950 LBS/PH. Available in two sizes, both the LS 45 & 95 can be easily configured with an external fast-acting dual ratio valve to sequentially pull material from two different sources.

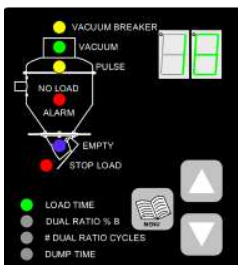
Material is moved quickly and efficiently with Posi Seal at the dump throat for a stronger vacuum and a seamless design that minimizes material hang-up points. A discreet material level sensor controls the loading sequence for a fully automatic operation.

Less Maintenance

Several standard features minimize maintenance and further extends the life of your loader. A fabric filter media fits snugly into a molded rubber gasket which serves as a secure chamber seal. The filter keeps dust and fines from entering the motor and can be replaced without having to replace the seal itself. To keep the filter clean, the LS series features a pulse sequence which directs a high velocity burst of air into the filter media for a thorough cleaning after each cycle. Our seamless loader design prevents fines, dust and material hang-up points.

Controls

SMC Control



All LS series loaders come standard with the SMC control.

Benefits:

- Dual ratio and filter pulse ready
- User adjustable load time and dual ratio parameters '%B' and number of 'A/B' shuttle cycles
- High-level material sensor



Posi Seal LS-45



Posi Seal & Stand LS-95



Material Deflector



Optional Dual Ratio Valve

SC Series

Self-Contained Vacuum Loaders

Benefits:

- Stainless steel construction
- Standard single element filter
- No internal seams
- Magnetic level sensor
- Quiet operation
- Quick resin change design
- Universal mounting flange
- Standard microprocessor control
- Soft start function
- RS-485 serial communication port
- 110 volt, 60 Hz. operation
- Optional dual element filter



SC50

SC52

SC55

SC Series 50, 52 & 55

The self-contained loaders come with an impressive list of standard features and are ready for immediate operation. Shipped complete with tubing, hose, clamps, material lance and microprocessor controls; be up and loading quickly. Constructed with stainless steel, the SC Series features a durable Ametek® motor; dual element, self-cleaning filter; magnetic level sensor; and a 360° rotational flange. Easy installation, industrial heavy duty vacuum motors and features designed to simplify operation as well as reduce maintenance, the SC Series loaders are a reliable choice for superior loading and durability.

More Performance

A heavy-duty vacuum motor mounted to the loader lid insures reliable operation and is capable of throughput rates up to 450 LBS/PH. Material conveys efficiently and its stainless steel construction minimizes the potential for resin hang up. The universal mounting flange rotates 360° for easy positioning. A discreet magnetic material level sensor controls the loading sequence for a fully automatic operation.

Available in three sizes, the SC Series loaders may be configured with an optional external dual ratio valve to sequentially load material from two different sources.



Pleated or Fabric Filter Media

Less Maintenance

Several standard features minimize maintenance and extends the life of the loader. A fabric or pleated filter media snugly fits into a molded rubber gasket to securely seal the chamber. The filter keeps dust and fines from entering the motor and includes a pulse sequence compressed air valve which directs a high velocity burst of air into the filter media for a thorough cleaning after each loading cycle.

A stainless steel inspection door on the base of the loader provides quick access to the chamber flapper and the seamless loader design prevents fines, dust and material hang-up points to prolong the life of the filter and motor.



Pulse Clean Valve



Inspection Door

CONTROL



SC Series loaders come standard with a solid state microprocessor control. Reliable and simple to operate, the SC Series control offers easy input of all loader functions and standard features to protect the motor and minimize maintenance.

A soft start function reduces wear and tear on the brushes, extends the life of the motor, and signals when to replace the brushes. Standard RS485 serial communication port offers connectivity.



Dustmaster Series

FLOOR FILTERS

Efficient Filtering of the Return Vacuum Line

- Easy access to filters
- Small footprint
- Swing bolts for easy lid removal

The DUSTMASTER Series floor filters feature both bag and cartridge style models. A requirement on all standard conveying lines, the DUSTMASTER cartridge style floor filter features a modular design and cartridge filter elements that are easy to remove and replace without disturbing the vacuum lines. Swing bolts permit easy lid removal and a black neoprene lid gasket ensures a tight seal. Efficiently filter the return vacuum line to the positive displacement pump from the vacuum chamber being filled.

Cartridges style features

- Easy Access to Filters
- Large Filter Media Area
- Leak Proof Collection Cone
- Small Footprint
- Swing Bolts for Easy Lid Removal

The DUSTMASTER bag style floor filter features industrial grade filter bags in a collection chamber that is easily removed without disturbing vacuum line connections. A leak-proof design assures a dust free environment that efficiently filters the vacuum return line to the pump from the vacuum chamber.

Bag style features

- Easy Access to Filters
- Leak Proof Collection Chamber
- Small Footprint
- Swing Bolts for Easy Lid Removal
- Collection Chamber Sight Glass and Handles

Only available in: US

PowerMax-HP

Positive Displacement Pump

Benefits:

- Quiet operation - with full sound enclosure
- Attractive stainless steel enclosure
- Compact design optimizes production floor space
- Easy component access through modular panel design
- Vacuum breaker valve for fast cycle loading
- Pumps available in 3, 5, 7.5, 10 and 15HP
- Single or multi-pump configuration



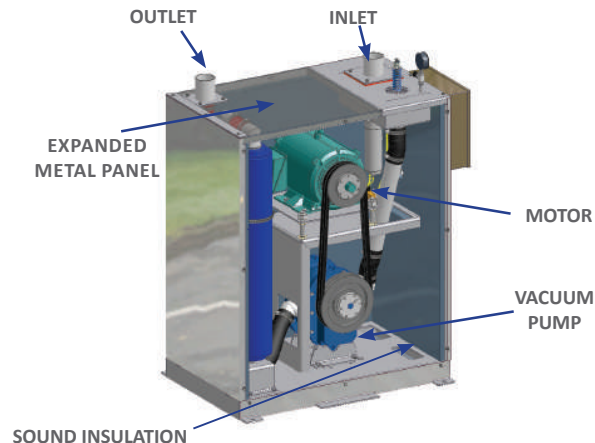
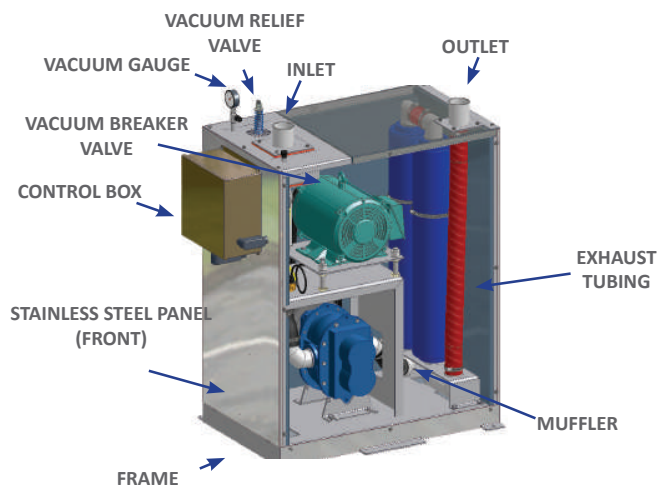
The PowerMax-HP unique design delivers a quiet operation that surpasses minimum OSHA noise requirements. Starter, vacuum switch, safety relief valve and full sound enclosure are standard features on each pump.

Compact, durable and attractive, the PowerMax-HP features a mirrored stainless steel outer finish with modular panels for easy access to all internal components. Designed to minimize floor space as well as noise reduction, high quality components provide the reliability you expect. The PowerMax-HP delivers the

maximum vacuum level within the line size and the integral vacuum breaker valve ensures maximum performance for fast cycle loading.

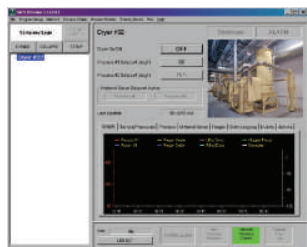
Available in single or multi-pump configurations, to address many conveying needs within one pump housing. The PowerMax-HP can be configured with up to three pumps on a common platform. The system includes valves and piping for a rapid changeover and is particularly useful when using one of the pumps as a spare or for preventive maintenance. PowerMax-HP, when you want the very best at the heart of your conveying system!

Specifications and Multi-Pump Configuration



CONTROLS

Factory Acquisition Control System - F.A.C.S



F.A.C.S. permits control of material conveying systems as well as monitoring of Maguire blenders, silo inventory, and most SPI compatible equipment such as dryers, mold temperature control units and chillers.

The two-wire power and communications network, in conjunction with the Windows platform, makes this system economical and easy to install, setup and operate. The system is also simple to expand and re-configure.

Users can import drawings and pictures to show system configurations or locations of equipment through a PC, the user can control or monitor system performance from the plant floor. With process chain analysis and verification it is possible to set up, monitor and record setpoints, equipment performance, define material flow paths and equipment selection with a single command. F.A.C.S. has full graphing capabilities and a built in SQL database to process all your information and store it with a complete set of reports for immediate or future use.

24/7 Control



The 24/7 loader is the most advanced, versatile, and user-friendly central loading system available. Easily configured, its full-color, LCD touchscreen (both 5.7" & 10.4" sizes available as single or dual) provides for intuitive

operation & maximum information.

The expandable & flexible 24/7 loader can be configured to operate as many as 36 stations, 9 pumps (with automatic pump-swapping), 16 global purge &/or dual-inlet valves, as well as many available other options available at the station level.



PowerMax PD Pump

POSITIVE DISPLACEMENT PUMP

Quiet operation with full sound enclosure

- Vacuum breaker valve for fast cycle loading
- Available in 25HP
- Single or Multi-Pump configuration

The PowerMax Series Positive Displacement Pump delivers a quiet operation that surpasses minimum OSHA noise requirements. Compact, rugged construction that is durable and attractive features an open frame construction for easy access to all internal components.

Available in single or multi-pump configurations, address many conveying needs within one pump housing. The PowerMax-PD delivers the maximum vacuum level within the line size and the integral vacuum breaker valve ensures maximum performance for fast cycle loading.

Only available in: US

Maxi-Vac & PowerMax Series

Vacuum Loading Systems

Benefits:

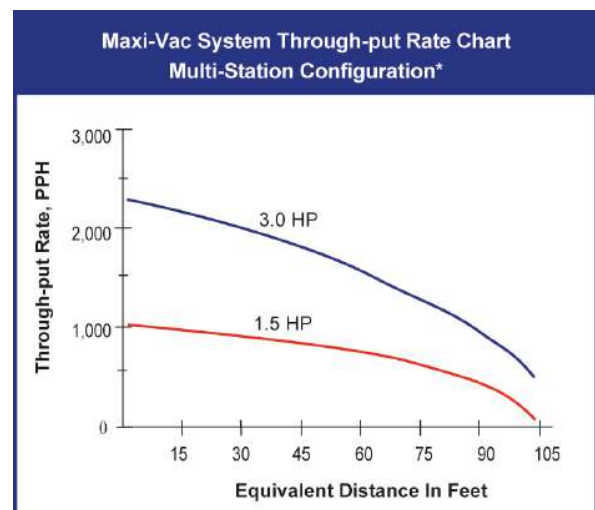
- Throughput rates up to 2,500 PPH
- Ultra-compact design
- Quiet
- Energy efficient
- Low maintenance
- Single or multiple station
- Easy to install
- Voltages available: 208, 230, 380, 415, 460, 575



Maxi-Vac Regenerative Pump

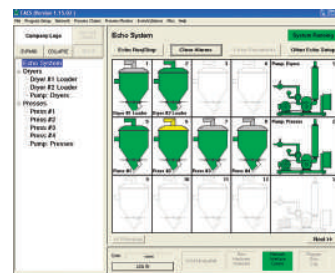
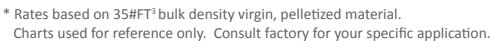
Maxi-Vac series vacuum pumps are low maintenance, regenerative pneumatic pumps that are powerful, compact and efficient. Requiring minimal floor space for installation, the Maxi-Vac series is perfect for an “up and in” loading system. Designed for maximum efficiency, units are economical to install, operate and maintain.

A centrifugal fan vacuum source makes Maxi-Vac pumps extremely energy efficient and quieter than positive displacement pump systems and in most applications a muffler is not needed. With only one moving part, Maxi-Vac series pumps also minimize maintenance and down time. Self contained and equipped with an on board motor starter; there are no belts, sheaves, guards or oil to service.



* Rates based on 35#FT³ bulk density virgin, pelletized material.
Charts used for reference only. Consult factory for your specific application.

Designed for higher volume conveying over a longer distance, the PowerMax series of positive displacement pumps feature a rotating lobe type blower which is protected by a vacuum relief valve. Compact in size for minimal use of floor space, the motor starter, vacuum switch, and muffler are mounted along with the blower on a rugged frame. Vacuum gauge, muffler, vacuum relief valve and belt guards are included.

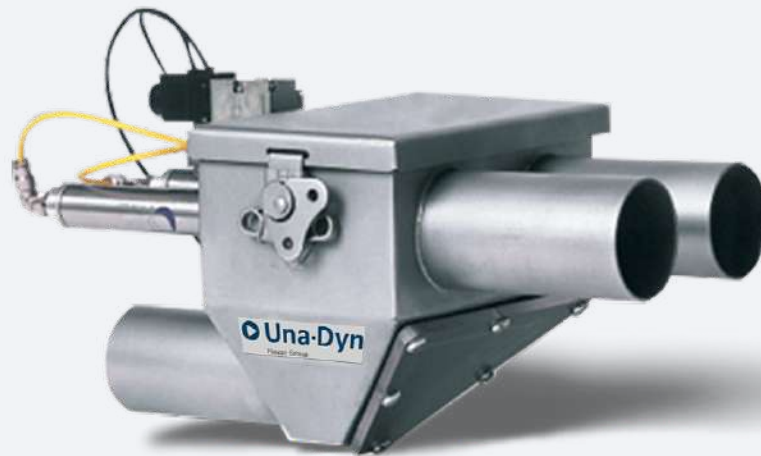


Distributed Control

Designed to optimize process control capability and performance while offering a simple operator interface. The long-time commitment to continuous process improvement and technology has put Una-Dyn and its customers in the best competitive position possible.

Adaptive controls which incorporate state of the art electronics and touch pad control delivers simple, one touch control. Password protect levels allow various degrees of plant personnel interface and SPI protocol and/or DDE interface permits communication with inplant networks. The loader control strategy is built upon the following technologies:

- 24/7 Control
- F.A.C.S. - Factory acquisition control system distributed control



Dual Ratio Valves

VALVES

Quick release access cover with safety Lock-Out

- Stainless steel construction
- Wear resistant surfaces
- 110/220/ 24 Vac, and 24 Vdc control

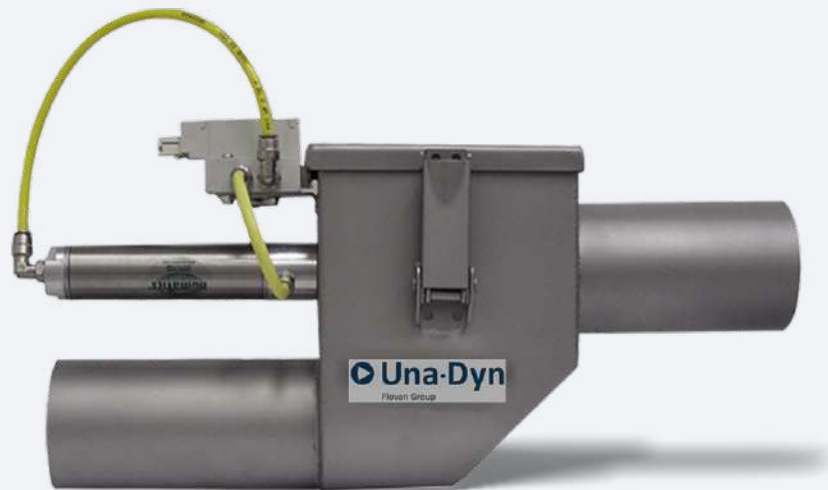
The External Dual Ratio Series of externally mounted Dual Ratio Valves is the quickest answer to converting existing single inlet chambers to dual inlet chambers.

The valve is designed with stainless steel construction, wear resistant seals and with further standard features including dual high speed "Posi-Seal valves.", quick connect self-sealing air fittings, and the material view port. The valve seating surface is highly wear resistant and can be spun 180 degrees to immediately provide another wear surface.

Complete with a simple to remove access cover and view port this unit comes ready to install and connect to most existing controls which supply a dual action signal. It also may be purchased with the Una-Dyn Dual Ratio, SCL, or SSL 2-Inlet controller.

- Quick connect self-sealing air fittings
- Material view port
- Exclusive "GB" finish which eliminates painting
- Posi-Seal valve seats

Only available in: US



Positive Shutoff Valves

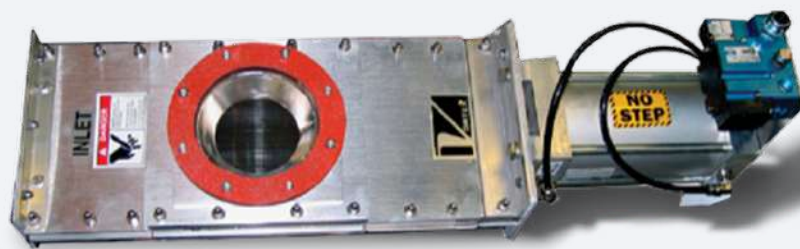
VALVES

Prevents leakages in conveying systems

- Positive sealing of vacuum chamber inlets
- Pneumatically plunger style valve
- For easy retrofit to existing equipment

Positive Shutoff Valves are installed on the material inlet of a vacuum chamber when it is connected to a common material line.

Only available in: US



Vortex Shutoff Valves

PNEUMATIC SLIDE VALVES

- Positive sealing for vacuum, pressure, or gravity type systems
- Pneumatic or hand actuated
- Stainless steel material contact points

The Vortex Shut-off Valve is a pneumatic slide valve that is used primarily as a positive, airtight, sealing device. Some of the most common usages are to seal the discharge throat of large, high pressure drop, drying hopper or on the discharge throat of vacuum chambers when an air tight throat seal is needed to support the operational parameters of the vacuum conveying application.

- Multiple inlet/outlet configurations available
- Lightweight narrow profile for ease of installation

Only available in: US

Saugfördergeräte

Hochwertige, modulare Lösungen für vielseitige Anwendungen
in der Schüttgutförderung

Vacuum Loaders

*High quality, modular solutions for various
applications in bulk feeding*



- Für alle Schüttgüter wie Granulat, Mahlgut oder Pulver
 - Hergestellt aus Edelstahl
 - Modulare Bauweise
 - Ausführung mit Bodenklappe und Endschalter
 - Kundenspezifische Lösungen auf Anfrage
 - Siemens Steuerung
-
- *For all types of bulk like pellets, regrind and powder*
 - *Made of stainless steel*
 - *Modular design*
 - *Loader with bottom flap and limit switch*
 - *On demand, customized solutions*
 - *Siemens control unit*



Klappbarer Deckel für FG
tiltable cover



Fördergerät mit Schieber
Separator with slide gate

Zentrale Saugförderung Central Vacuum Station

- Ausführung mit Seitenkanal- oder Wälzkolbengebläse
 - Zentralvakuum
 - Selbstabreinigende Zentralfilter verschiedener Größen
 - Siemens Steuerung
-
- *With side channel or rotary piston blower*
 - *Central vacuum*
 - *Self cleaning dust separator in different sizes*
 - *Siemens control unit*

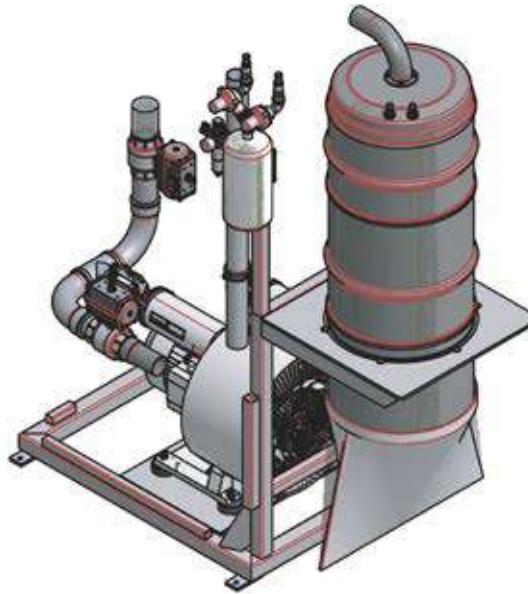
Zentralfilter mit staubdichtem
Sammelbehälter
central filter station



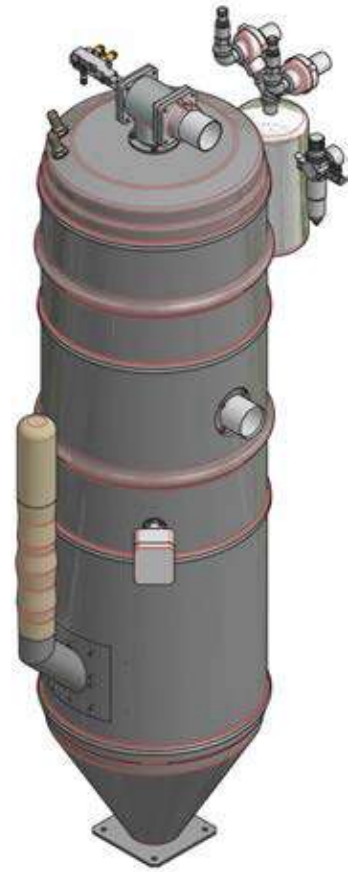
Besonderheiten und Optionen

Features and Options

- Selbstabreinigende Filter bei Pulver oder staubhaltigem Schüttgut
- Austragshilfen als Hub- oder Hub- und Schwenkwerk
- Füllstandserfassung kapazitiv oder über Drehflügelmelder
- Sonstige Optionen:
 - Schauglas
 - Klappbarer Deckel
 - Hitzeisoliert
 - Teflonbeschichtet und perlgestrahlt
 - Druckausgleichsventil
 - Trockenluftförderung
 - Ausführung als Saugwaage
 - Sonderausführung für abrasive Schüttgüter
- *Self cleaning filter in use of powder or dust containing materials*
- *Discharge agitator*
- *Filling level detecting by capacitive proximity switch or rotary level sensor*
- *Additional options:*
 - *Sight glass*
 - *Tilttable cover*
 - *Insulation for higher temperature applications*
 - *Inner surface teflon coated*
 - *Pressure compensating valve*
 - *Dry air conveying*
 - *Separator on load cells*
 - *Special design for abrasive bulk*



Zentralfilteranlage
Central vacuum station



FGV Saugförderung für Pulver
FGV Vacuum loader for powder



Austragshilfe als Hubwerk oder Schwenkwerk – *Discharge agitator*



Einsätze für FG's, Grobfilter, Filterkartuschen
Filter cartridge and coarse filter



FGG Abscheider mit Schaugläsern
Separator with sight glass



Filtereinsätze
Filter cartridge

Technische Daten

Technical Data

Volumina sowie Bauhöhen können je nach Ausführung und Kundenanforderung variieren <i>Capacities and construction heights can vary according to construction design and customer requirement</i>	Volumen bis Mitte Füllstandsmelder ohne Bodenklappe <i>Volume middle of level detector</i>	Volumen bis Mitte Produktstutzen ohne Bodenklappe <i>Volume middle of feed socket</i>	Bauhöhe <i>Construction height</i>
FG 160	3,5 l	6,0 l	625 mm
inkl. Volumenerweiterung <i>incl. extension</i>	5,5 l	8,0 l	825 mm
FG 240	8,5 l	13,5 l	750 mm
inkl. Volumenerweiterung <i>incl. extension</i>	22,0 l	27,0 l	1050 mm
FG 320	16,0 l	29,5 l	900 mm
inkl. Volumenerweiterung <i>incl. extension</i>	39,5 l	53,0 l	1200 mm
FG 440	37,0 l	73,0 l	1050 mm
inkl. Volumenerweiterung <i>incl. extension</i>	81,5 l	117,5 l	1350 mm
FG 560	70,0 l	127,0 l	1200 mm
inkl. Volumenerweiterung <i>incl. extension</i>	140,0 l	197,0 l	1500 mm



Venturi Feeder

STALL THROUGHPUT FEEDER

Particularly suitable for master-batch or additive granules due to its low throughput feeding, it is very compact and can be integrated on top of a drying hopper or a buffer hopper.



Very compact



Suitable for low production



Easy maintenance



PET Preforms
& Bottles



Rigid
Packaging



Automotive
components



Technical
parts



Medical
solutions



Thermoforming
& Technical Sheets



Flexible Film



Pipes, Profiles,
Cables



Fibres &
Strapping



Recycling



Compounds

Electrical feeding	24 Vdc
Max temperature material to be conveyed	120 °C
Noise level	< 70 dB(A)
Control	Easy3/Easy3+ or integrated in the DPA dryer control



The filtering cartridge is installed on the top of the feeder and it can be easily removed, just unfastening the central screw



The feeding cycle start is managed with a signal coming from an external sensor



Venturi feeder can be integrated in a standard Easy3/Easy3+ system

Somos®

CFG 05-10



TRANSPARENT BODY RECEIVERS

Piovan has extended the three-phase C series receivers with two new models, SOMOS® CFG05 with a 4-litre capacity and SOMOS® CGF10 with a 9-litre capacity.

The transparent body made of transparent polyamide ensures high abrasion resistance and allows visual verification of the filling process and monitoring of material changes.

SOMOS® receivers are widely used in all areas where material transport requires maximum cleanliness and the lowest possible pollution.



Integration with easy3/easy3+ system



Easy to maintain and clean



Transparent and abrasion-resistant body



PET Preforms
& Bottles



Rigid
Packaging



Automotive
components



Technical
parts



Medical
solutions



Thermoforming
& Technical Sheets



Flexible Film



Pipes, Profiles,
Cables



Fibres &
Strapping



Recycling



Compounds

Filling volume	4 and 9 litres
Filters type	Mesh filter, (optional cartridge or fabric filter with air blowing)
Options / Models	Suitable for granules up to 80°C, Easy3 control or PLC terminal block, With end-of-charge sensor, With side discharge filter



Possibility of orientating the vacuum and material inlet independently



Quick and easy maintenance thanks to transparent body and quick-release hinges

	Volume (dm³)	Lower flange (mm)	Pipe diameter (mm)
CFG05	4	280	40/50
CFG10	9		

По вопросам продаж и поддержки обращайтесь:

Алматы (727)345-47-04
Ангарск (3955)60-70-56
Архангельск (8182)63-90-72
Астрахань (8512)99-46-04
Барнаул (3852)73-04-60
Белгород (4722)40-23-64
Благовещенск (4162)22-76-07
Брянск (4832)59-03-52
Владивосток (423)249-28-31
Владикавказ (8672)28-90-48
Владимир (4922)49-43-18
Волгоград (844)278-03-48
Вологда (8172)26-41-59
Воронеж (473)204-51-73
Екатеринбург (343)384-55-89

Иваново (4932)77-34-06
Ижевск (3412)26-03-58
Иркутск (395)279-98-46
Казань (843)206-01-48
Калининград (4012)72-03-81
Калуга (4842)92-23-67
Кемерово (3842)65-04-62
Киров (8332)68-02-04
Коломна (4966)23-41-49
Кострома (4942)77-07-48
Краснодар (861)203-40-90
Красноярск (391)204-63-61
Курск (4712)77-13-04
Курган (3522)50-90-47
Липецк (4742)52-20-81

Магнитогорск (3519)55-03-13
Москва (495)268-04-70
Мурманск (8152)59-64-93
Набережные Челны (8552)20-53-41
Новокузнецк (3843)20-46-81
Ноябрьск (3496)41-32-12
Новосибирск (383)227-86-73
Омск (3812)21-46-40
Орел (4862)44-53-42
Оренбург (3532)37-68-04
Пенза (8412)22-31-16
Петрозаводск (8142)55-98-37
Псков (8112)59-10-37
Пермь (342)205-81-47

Ростов-на-Дону (863)308-18-15
Рязань (4912)46-61-64
Самара (846)206-03-16
Санкт-Петербург (812)309-46-40
Саратов (845)249-38-78
Севастополь (8692)22-31-93
Саранск (8342)22-96-24
Симферополь (3652)67-13-56
Смоленск (4812)29-41-54
Сочи (862)225-72-31
Ставрополь (8652)20-65-13
Сургут (3462)77-98-35
Сыктывкар (8212)25-95-17
Тамбов (4752)50-40-97
Тверь (4822)63-31-35

Тольятти (8482)63-91-07
Томск (3822)98-41-53
Тула (4872)33-79-87
Тюмень (3452)66-21-18
Ульяновск (8422)24-23-59
Улан-Удэ (3012)59-97-51
Уфа (347)229-48-12
Хабаровск (4212)92-98-04
Чебоксары (8352)28-53-07
Челябинск (351)202-03-61
Череповец (8202)49-02-64
Чита (3022)38-34-83
Якутск (4112)23-90-97
Ярославль (4852)69-52-93

Россия +7(495)268-04-70

Казахстан +7(727)345-47-04

Беларусь +(375)257-127-884

Узбекистан +998(71)205-18-59

Киргизия +996(312)96-26-47

эл.почта: pah@nt-rt.ru || сайт: <https://piovan.nt-rt.ru/>